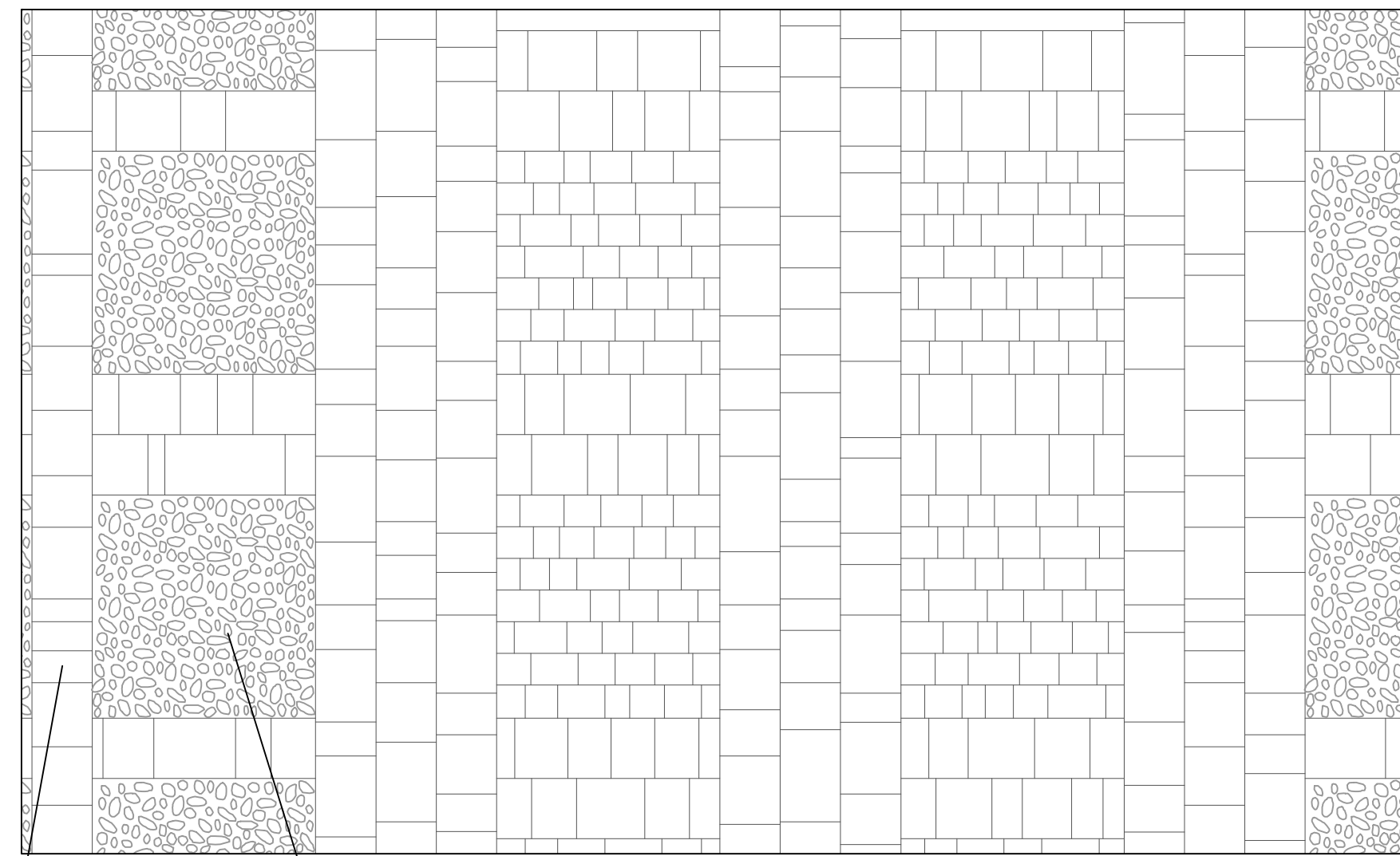


PAVIMENTAZIONE MISTA

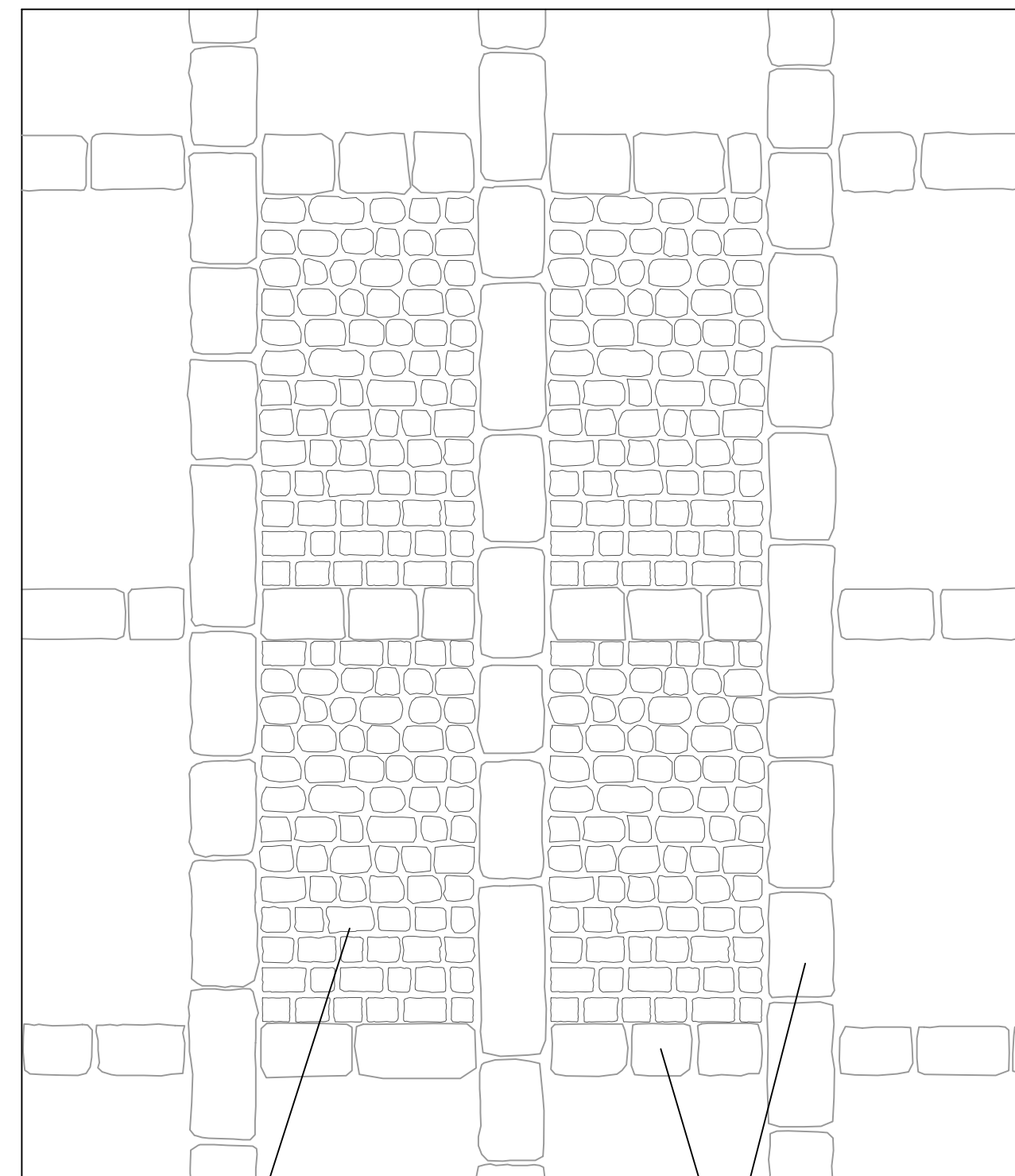
PIAZZA ALDO MORO - VIA ROMA



pietra lavica

ciottolato di fiume

VIA OROLOGIO



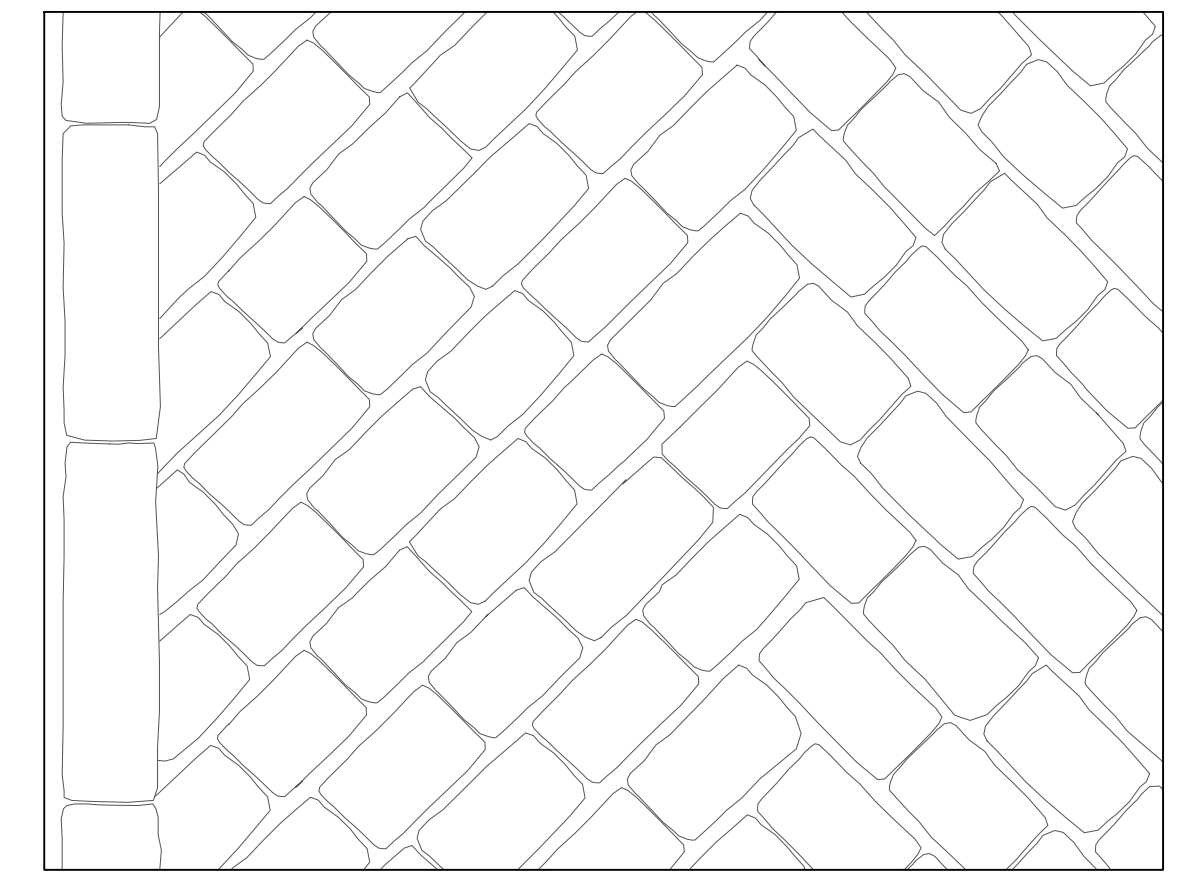
PIETRA LAVICA

PIETRA BIANCA DI MODICA

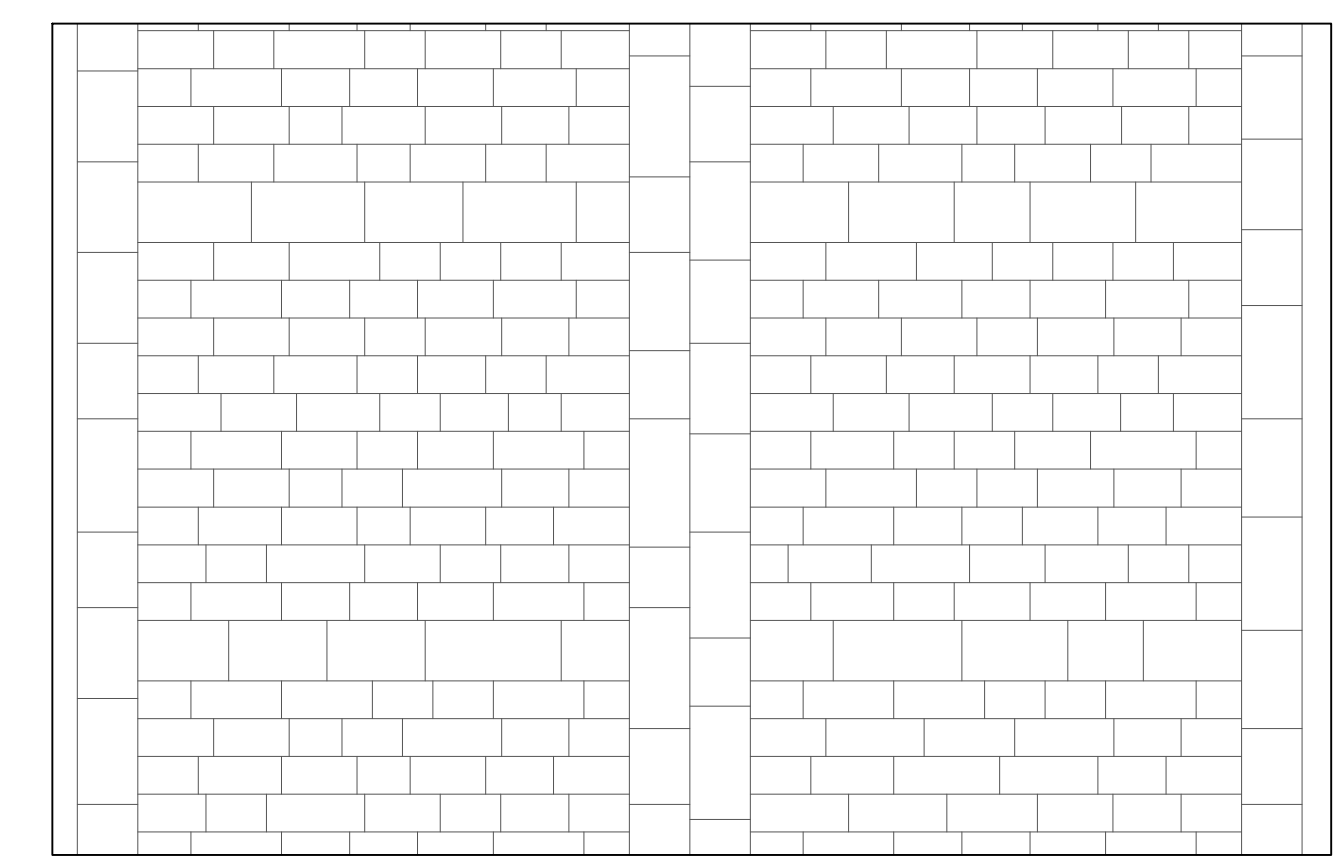
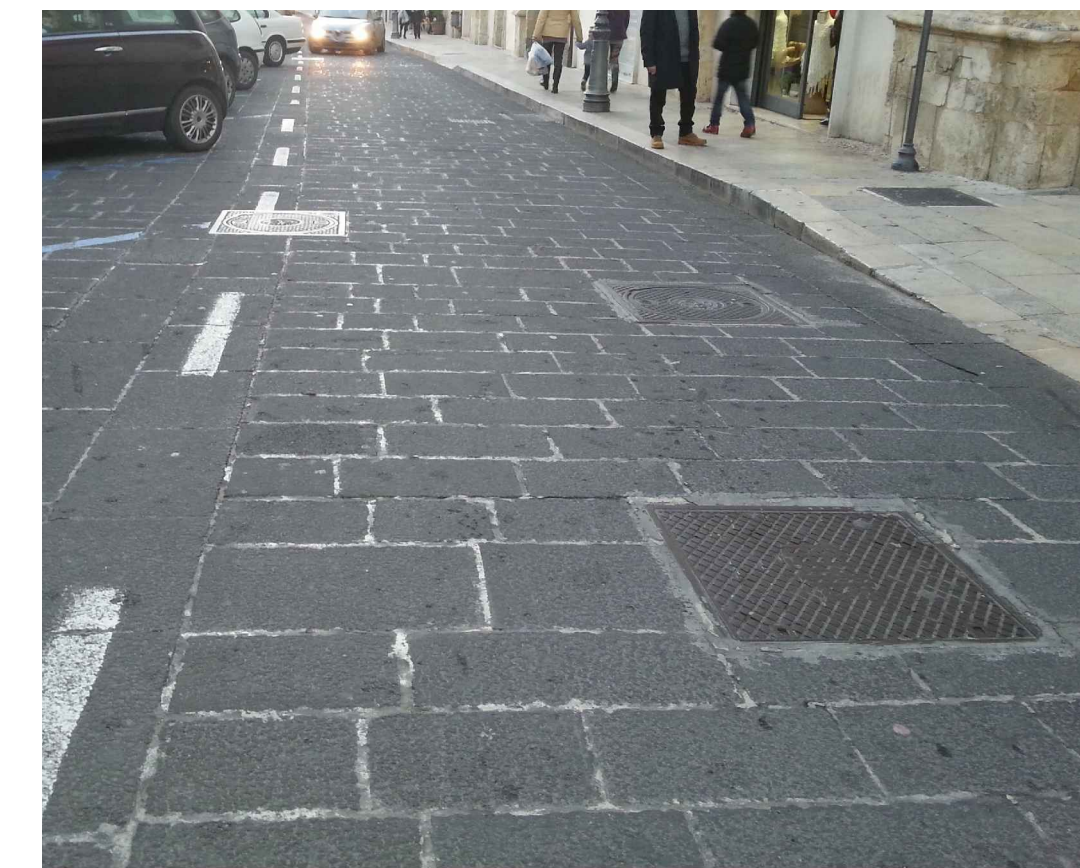
SCALA 1:25

PAVIMENTAZIONE INTERAMENTE IN PIETRA LAVICA

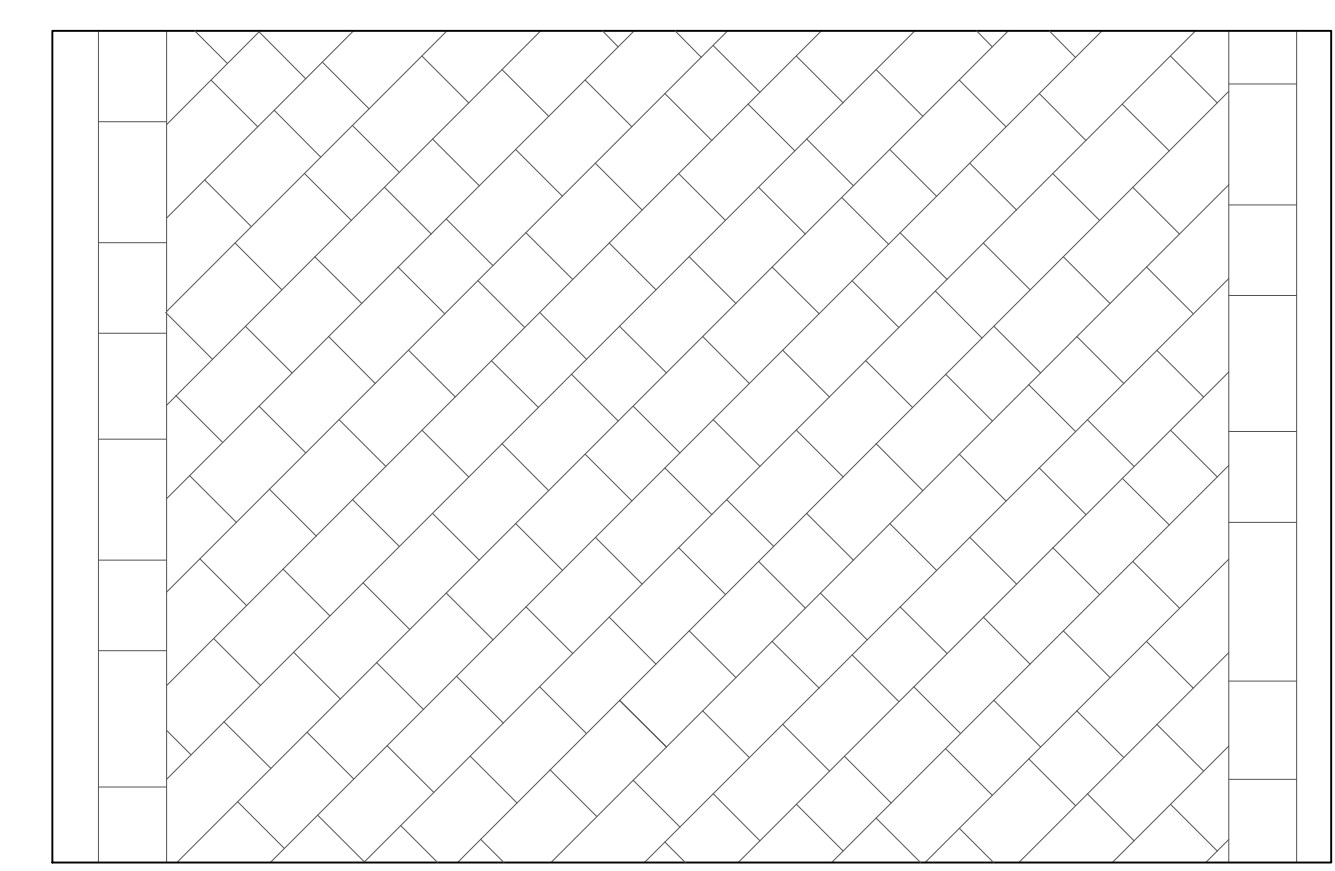
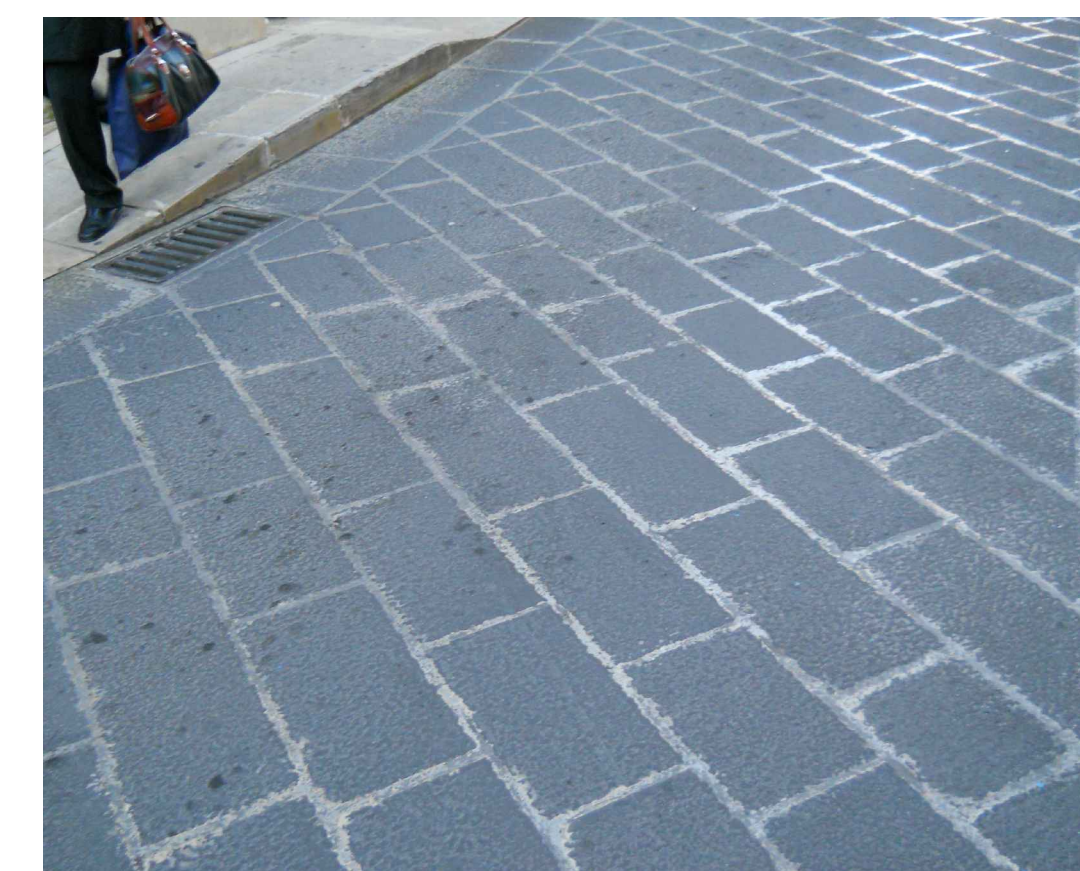
VIA GAETANO ITALIA - VIA DUCA D'AOSTA



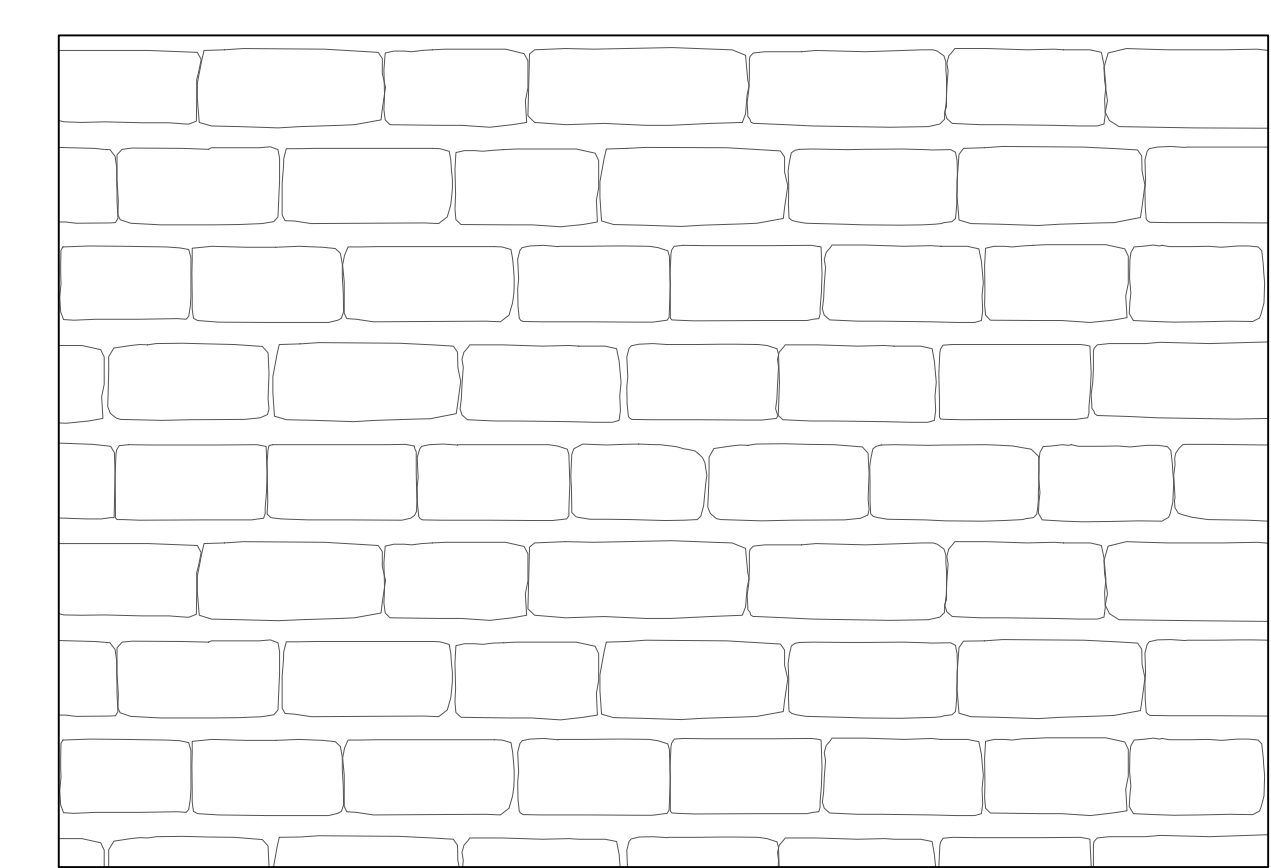
CORSO VITTORIO EMANUELE



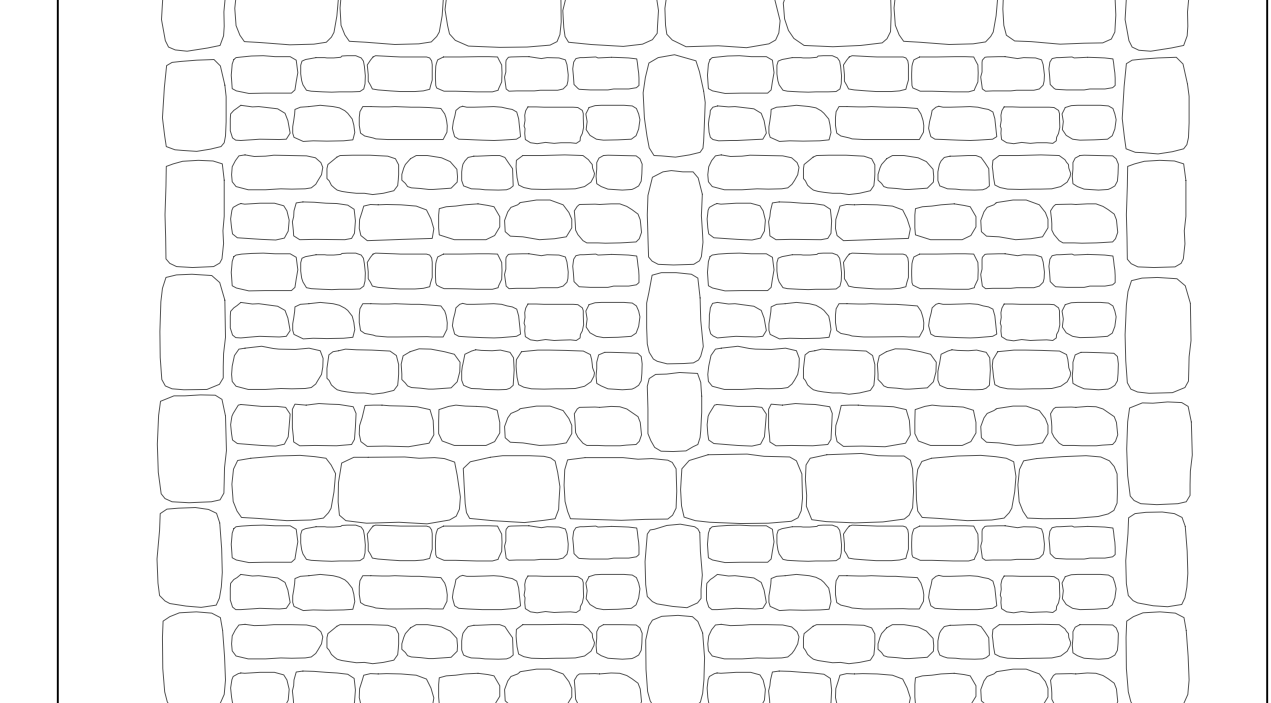
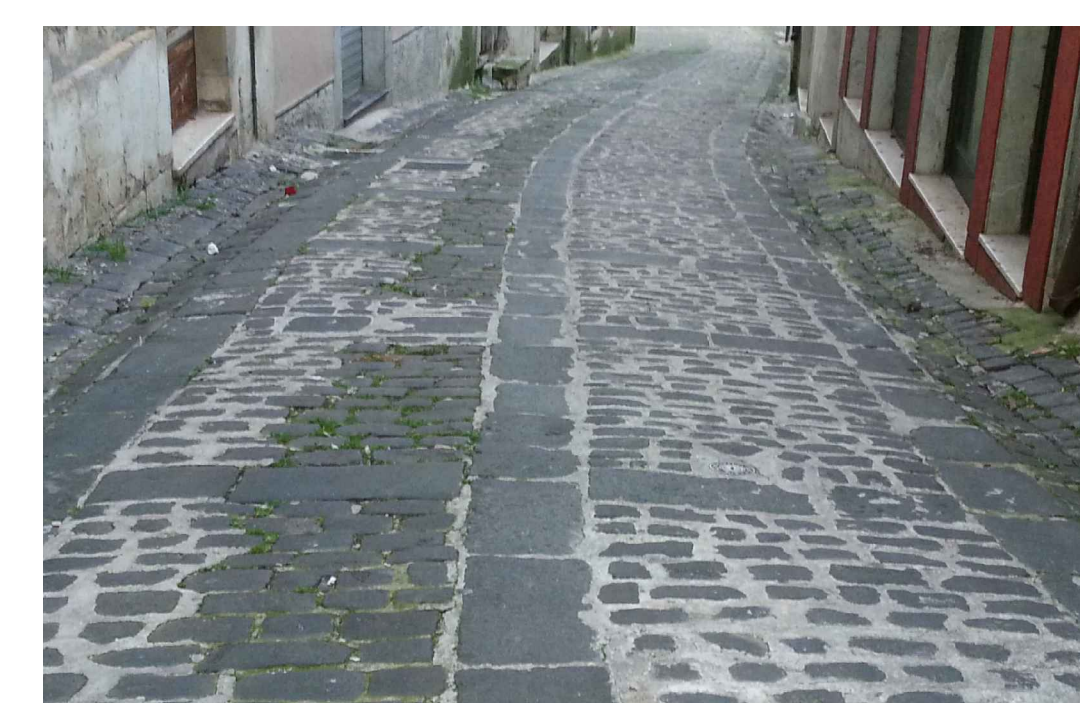
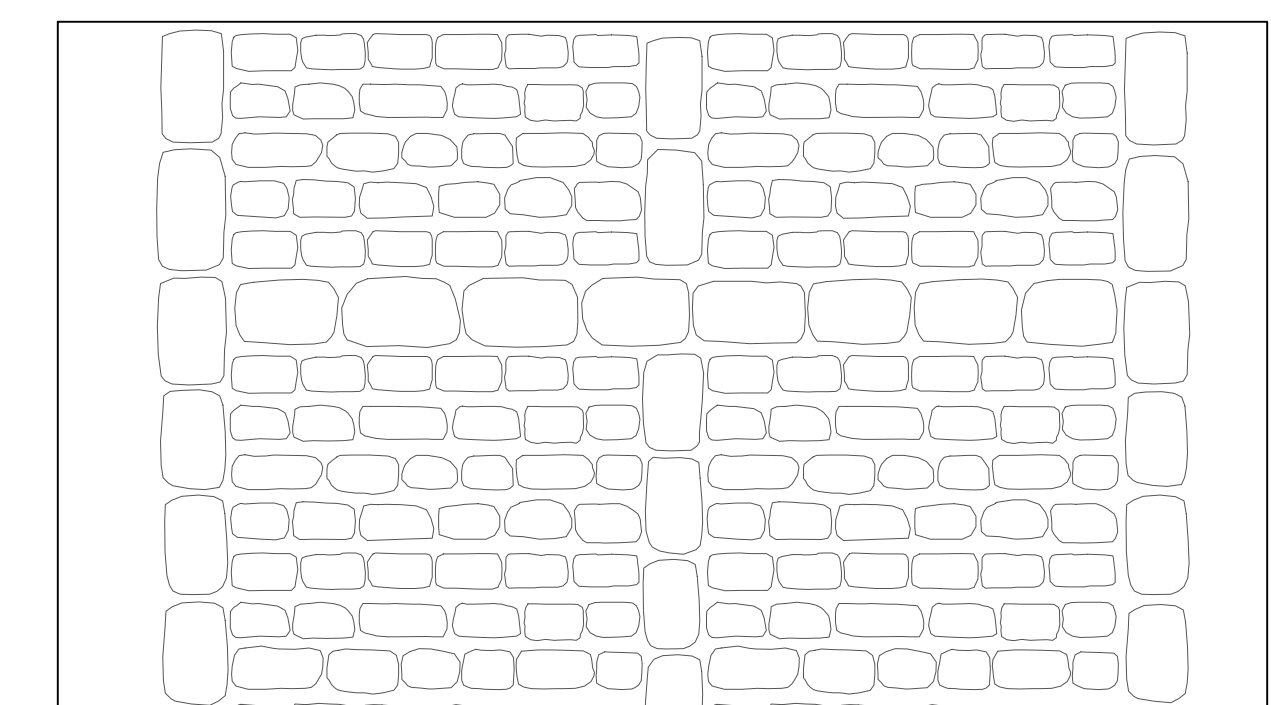
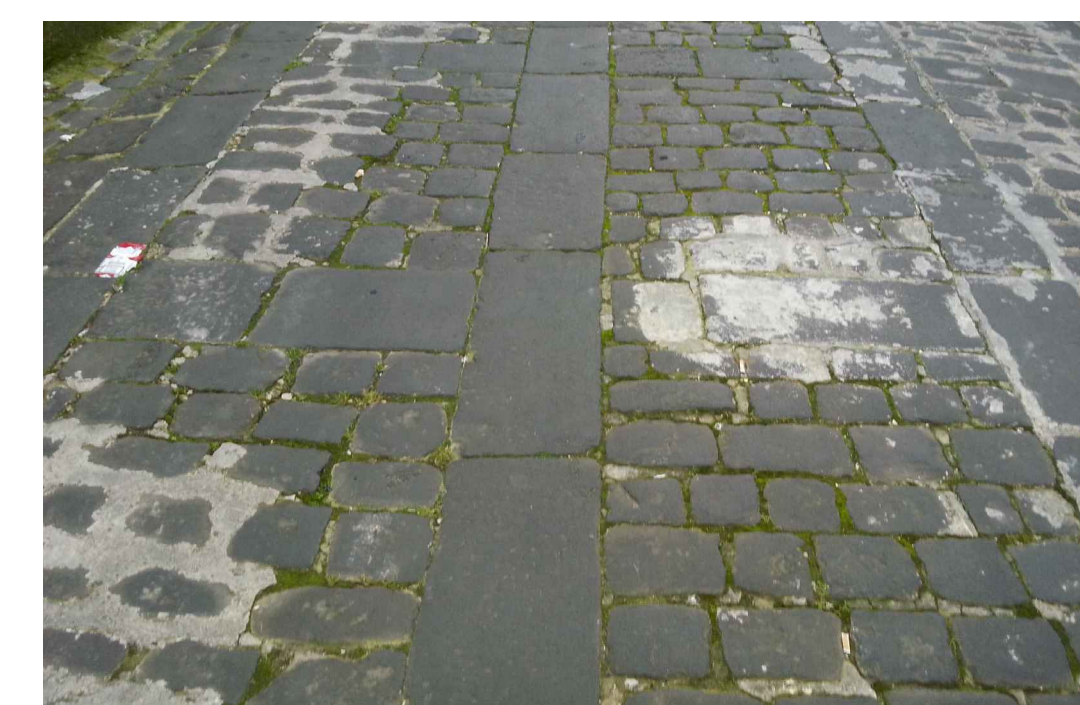
VIA CARLO ALBERTO



VIA GABRIELE JUDICA

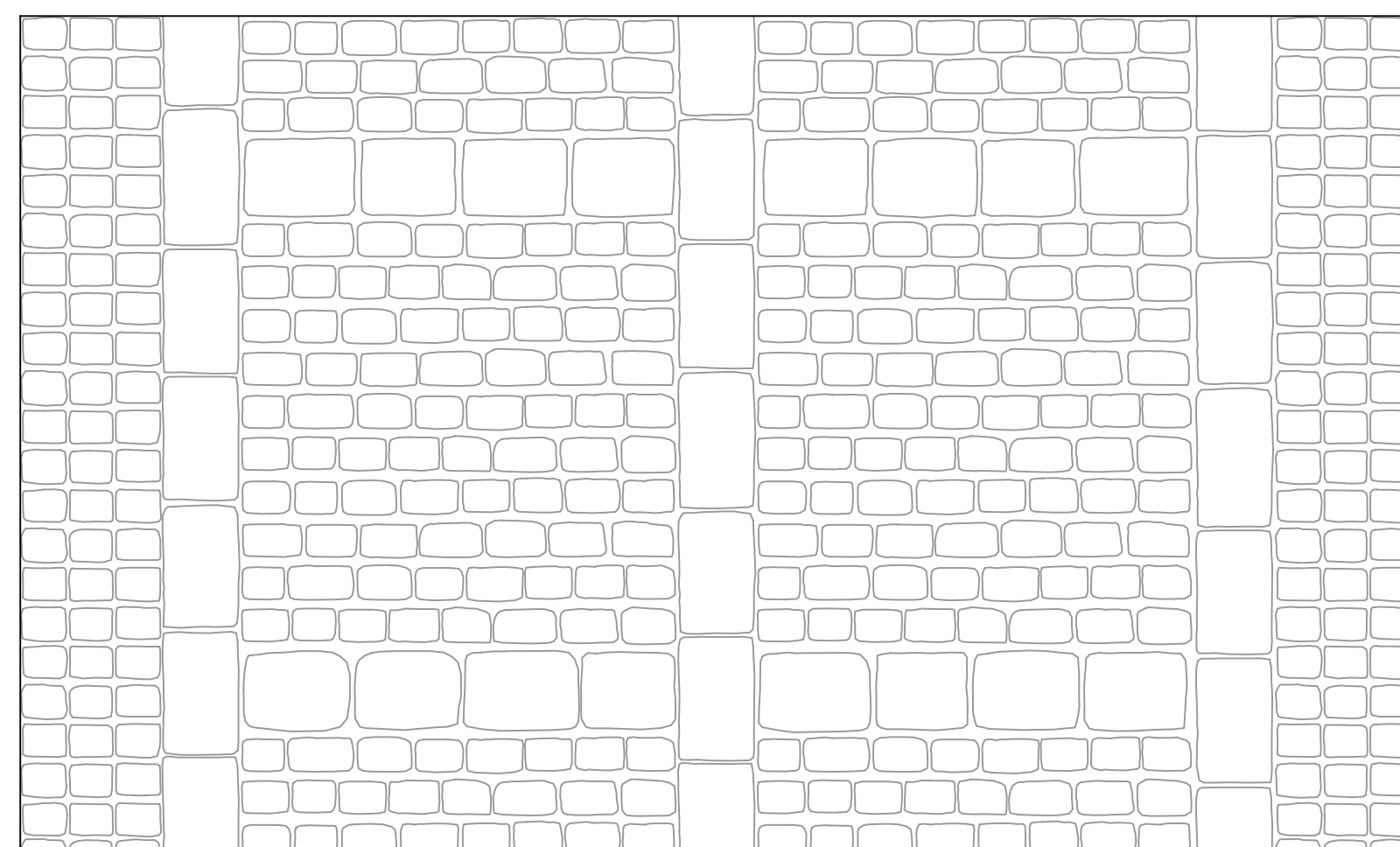
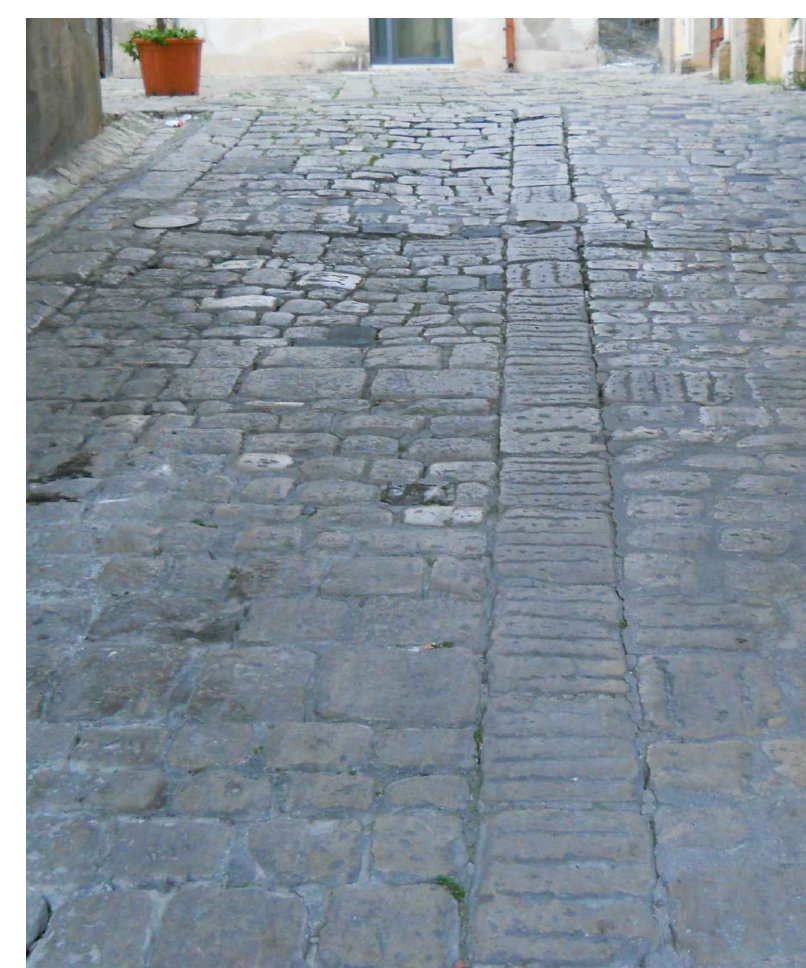


VIA MAESTRANZA



PAVIMENTAZIONE INTERAMENTE IN PIETRA BIANCA DI MODICA

VIA OROLOGIO



<p><b>COMUNE DI PALAZZOLO ACREIDE</b> CITTÀ PATRIMONIO DELL'UMANITÀ WORLD HERITAGE LIST U.N.E.S.C.O</p>	
<p><b>Piano Regolatore Particolareggiato del Centro Storico</b></p>	
<p>Abaco delle pavimentazioni</p>	<p>SCALA 1:1000</p>
<p>Redattori:</p> <p style="text-align: center;">Coord. - Prof. Ing. Arch. Marco Dezzi Bardeschi Arch. Armando Pizzo</p>	
<p>GENNAIO 2014</p>	
<p>Assistenti: Dott. Marco Miegazza Arch. Francesca Carpio Arch. Giulio Cordicchi Arch. Antonio Cugno</p>	<p>Arch. Francesco Infantino Arch. Salvatore Infantino Dott. Luca Orti</p>
<p>R.U.P.: Dott. Santo Monaco</p>	<p>ALLEGATO</p> <p style="font-size: 2em; font-weight: bold;">TAV.11</p>